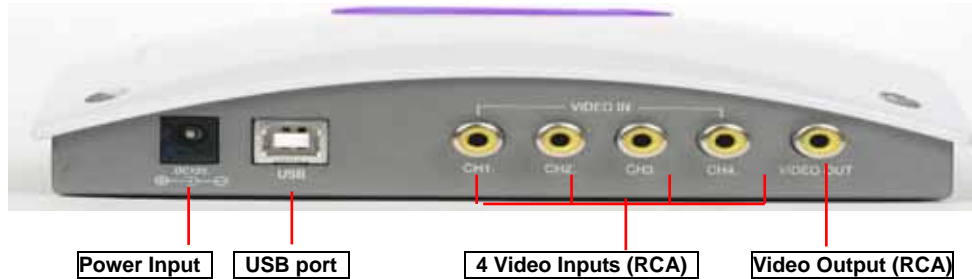


# E.Z.-UDVR Quick Installation Guide

## 1. E.Z.-UDVR BX H/W Installation

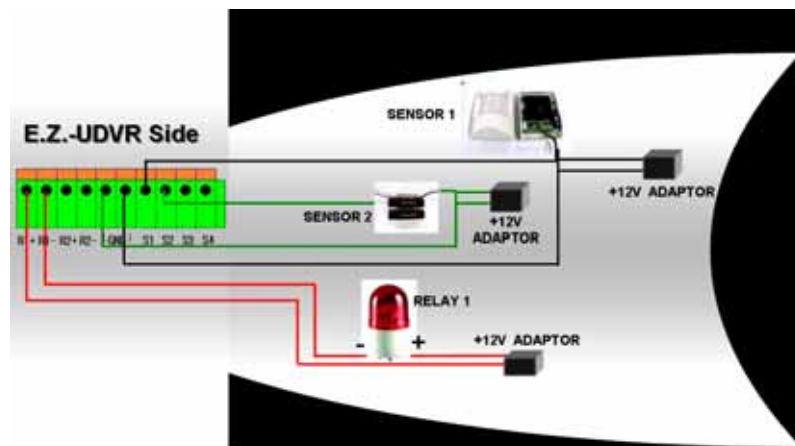


1) Connect the cameras to the E.Z.-UDVR BX unit via the 4 RCA Video Input terminals.

**[NOTE]** In case of using other general CCD camera, when it connects to the E.Z.-UDVR BX unit, camera must adopt double-shield cable so that it can prevent shaken image from electro magnetic wave from outside. Existing camera connection cable is treated cable from the electro magnetic wave.

**[REFERENCE]** To Install the PTZ Camera, refers to <Appendix 1.Pan/Tilt/Zoom Camera Installation. >.

2) If desired, connect sensors and relays to the I/O terminals at the bottom of the E.Z.-UDVR BX unit.



### **[REFERENCE] Required Specification of Sensor connecting wire**

Connection wire that has small internal resistance is recommended. Please refer to the following.

- (1) Number of Sensor: **4 ea (8ea with a second E.Z.-UDVR)**
- (2) Voltage between sensor input and GND, when sensor input is opened: **+5 Volt**
- (3) Terminal voltage: **High = stand by, Low = Activated**
- (4) Max resistance for activation: **500 Ohm**

3) Connect the supplied USB cable to USB port of the E.Z.-UDVR BX unit.

\* Please do not connect yet to the PC.

4) When ready to proceed with the software installation, connect the supplied power adaptor to Power Input terminal of the E.Z.-UDVR BX unit.

## 2. E.Z.-UDVR BX Package Contents

- ◆ E.Z.-UDVR BX system
- ◆ E.Z.-UDVR BX observation camera (optional)
- ◆ 1m USB cable
- ◆ Power adaptor & Power Cord
- ◆ Installation CD (Inc. Server Program, Client Program & Search Program)
- ◆ Quick Installation & FAQ Guide

E.Z.-UDVR BX is designed with applying Original Certification System Code to prevent unauthorized Copy.  
E.Z.-UDVR BX is designed to operate after its authorized approval code is matched with Software program.

### 3. E.Z.-UDVR BX Driver Installation

E.Z.-UDVR BX provides the **Autorun** with CD for the more easy installation. Auto-Installer will instruct you to easily install the device driver, software programs and Mpeg4 encoder.

(The screenshots shown below are taken from Windows XP and may vary slightly depending on the Operating System.)

There is two ways to install the driver & software to your PC.

**- In the case that you connected E.Z.-UDVR BX to your PC before running the Autorun in the provided CD. – Firstly, driver installation and program installation next.**

- 1) When you connected E.Z.-UDVR BX to your PC and turn on the power before running the Autorun in the provided CD, you will get the following message dialog (titled as "Welcome to the Found New Hardware Wizard") appears automatically. Check the option of "Install from a list or specific location [Advanced]", and click the 'Next' button.
- 2) Please insert the provided CD and designate the CD location from the following message dialog
- 3) When found the driver file for E.Z.-UDVR BX, the follow dialog appears. Select the file matched and click the 'Next' button.



- 4) With starting the driver installing, the below screen will be shown. Click the 'Continue Anyway' button to proceed
- 5) The driver software for E.Z.-UDVR BX is installing. Please wait.
- 6) Windows has finished installing the driver for E.Z.-UDVR BX. Click "Finish" button.

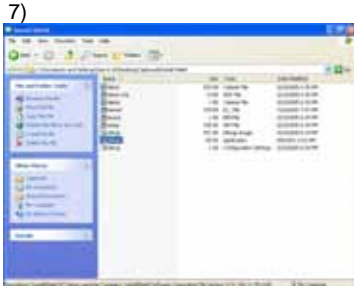


Now you have successfully installed the device driver for the E.Z.-UDVR BX hardware system.

The below message will appear on the right-lower side of the desktop; (-Found New Hardware: Your new hardware is installed and ready to use.)



- 7) After completing the driver installation, you need to install the software program from the provided CD as shown in the following. Please click the "setup.exe" to install the software program.



- 8) The installation procedure from the next is same to "Software Installation" as described in the following page.

## 4. E.Z.-UDVR BX S/W Installation (Server, Client, Search)

– In the case that you run the provided CD before connecting E.Z.-UDVR to your PC and turn the power on.(You don't need to install the device driver at separate.)

**[NOTE]** You will need the product's serial number to complete the installation of the software.  
The product number may be found on the CD-ROM.

- 1) In "E.Z.-UDVR BX Version 1.0" dialog, click the "Next" button.
- 2) Select Component" dialog appears. Choose one among 4 options that you want to install. Click "Next" button.
- 3) Customer Information" dialog appears. Enter your (or your company's) name and the product Serial Number.



**[NOTE]** This dialog message appears only when you select and install "All components (Server & Search & Client)"

- 4) "Choose Destination Location" dialog appears. Select folder where Setup will install files. Click "Next" button.
- 5) "Select Program Folder" dialog appears. Choose a program folder name for this E.Z.-UDVR BX server system and click 'Next' button.
- 6) "Setup Status" dialog appears and installs the files required to operate the E.Z.-UDVR BX



**[NOTE]** The default installation directory is C:\Program Files\E.Z.-UDVR BX. When install is complete the following icons will be displayed on the desktop.

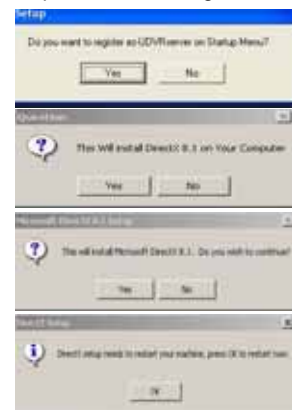
- 7) If installing the files is finished, you choose whether or not register the E.Z.-UDVR BX Server on Startup Menu.
- 8) After this, the following DirectX install dialog appears. Click the 'Yes' button here

**[REFERENCE]** If DirectX 9.0 software is already installed, its installation procedure of from (8) to (11) will be omitted.

- 9) Click also 'Yes' button here to add the shortcut of DirectX.
- 10) Click also 'Yes' button for accepting all of the terms of the preceding License Agreement
- 11) Click the 'Ok' button. Now you have successfully installed the DirectX9.0 for E.Z.-UDVR BX system

**[REFERENCE]** If DirectX 9.0 software is first installed, your computer with Windows 98 or ME will be restarted.




**[REFERENCE]** If DirectX 8.1 software is already installed, its installation procedure of from (9) to (12) will be omitted.



Now you have successfully installed the application program for the E.Z.-UDVR BX system.

In case of installing the driver or software, if 'Exit' is clicked, the message dialog for rebooting the computer will appear as follow. After finishing the installation, you must reboot this computer to take effect. Select one and click "OK" button to finish the Auto-Installer.

After a moment, computer restarts and operates the E.Z.-UDVR BX Server system. And E.Z.-UDVR BX server will be displayed automatically on the main screen.

\* E.Z.-UDVR BX Server icon  , Client icon  , Search icon 

## 5. Frequently Asked Questions about E.Z.-UDVR BX

### 5.1 About PC system or Windows

**QUESTION:** What are the MINIMUM PC system requirements for the EZ-UDVR?

**ANSWER:** Due to the variety of application requirements from different users, we are obligated to instruct the MINIMUM PC system requirements as the following diagram.

| Applications \ PC Requirements  | CPU Spec              | RAM Memory  | Video Card Memory | USB Version      |
|---|-----------------------|-------------|-------------------|------------------|
| 4ch 120fps Display/Recording without any kind of multi-tasking ( <b>Real-time</b> )               | Above Intel P4 1.6Ghz | Above 256MB | Above 64MB        | USB1.1 or USB2.0 |
| 4ch 120fps Display/Recording with multi-tasking of simple program operation like MS Word or Excel | Above Intel P4 2.0Ghz | Above 256MB | Above 64MB        | USB1.1 or USB2.0 |
| 8ch 120fps Display/Recording without any kind of multi-tasking ( <b>Non Real-time</b> )           | Above Intel P4 1.6Ghz | Above 256MB | Above 64MB        | USB1.1 or USB2.0 |
| 8ch 120fps Display/Recording with multi-tasking of simple program operation like MS Word or Excel | Above Intel P4 2.0Ghz | Above 256MB | Above 64MB        | USB1.1 or USB2.0 |
| 8ch 240fps Display/Recording without any kind of multi-tasking ( <b>Real-time</b> )               | Above Intel P4 3.0Ghz | Above 512MB | Above 128MB       | USB2.0           |
| 8ch 240fps Display/Recording with multi-tasking of simple program operation like MS Word or Excel | Above Intel P4 3.0Ghz | Above 512MB | Above 128MB       | USB2.0           |

**QUESTION:** When I change the USB port where I connect the EZ-UDVR, it appears to the screen that my PC needs to newly install its drivers. Why do I have to install the drivers again?

**ANSWER:** It is the characteristic of USB port. We recommend you not to change the USB port to avoid any kind of unexpected problem once you connected the EZ-UDVR and installed the drivers to your PC. However, if you are obligated to change the port, then it is necessary to install the drivers again. But it is not necessary at all to uninstall the existing program and reinstall it.

**QUESTION:** When I connect the EZ-UDVR to my WindowsXP PC, there appears a sentence in the system tray saying that "This device can perform faster – This USB device can perform faster if you connect it to a Hi-speed USB2.0 port. For a list of available port, click here" What does this sentence mean?

**ANSWER:** The EZ-UDVR is designed to be well-performed in USB1.1(Non Hi-speed) as well as USB2.0(Hi-speed) The above sentence appears when your PC does not support Hi-speed USB2.0. If you can upgrade your PC to support Hi-speed USB2.0, then you will be able to see that the EZ-UDVR performs the display and recording in much higher speed, and clearer image bit-rate.

**QUESTION:** When I try to start the application in WindowsXP SP2, the system is giving a Windows Security Alert saying that "To help protect your computer, Windows Firewall has blocked some features of this program. – Do you want to keep blocking this program?" What should I do when I get this message?

**ANSWER:** The above message only appears when starting the application software in WindowsXP SP2 installed PC. As we understand, WindowsXP SP2 is released to mainly add the network security features, and that message is coming from the WindowsXP Firewall program.

Please select "Unblock" option in the check box to allow EZ-UDVR to enable its remote access feature.

**QUESTION:** When I try to close application or when I click on setup the system is asking for a password, what do I do?

**ANSWER:** The default password is always 1111.

**QUESTION:** How many passwords does this system have?

**ANSWER:** There are 2 passwords available on the system, a System Password and a Network Password. The default System username is admin, and the password is master.

**QUESTION:** If I forget the password what do I do?

**ANSWER:** Please Re-install the EZ-UDVR Application software after uninstalling it from the "Add or Remove Program" menu in Control Panel.

**QUESTION:** Where can I find the serial number to install the EZ-UDVR software?

**ANSWER:** The serial number is available on the back of the CD envelope. It looks like this XXXX-XXXX-XXXX-XXXX. This is case-sensitive and the dashes must be entered.

**QUESTION:** When I try to install the software there are so many selections, which one is right for me?

**ANSWER:** If you are installing the software on a computer where you have the EZ-UDVR, please select the first option such as SERVER, CLIENT AND SEARCH. But if you are installing on to a remote computer please install CLIENT and SEARCH only option. Do not select SERVER.

### 5.2 About remote access

**QUESTION:** For remote access, am I required to have high speed internet service at the server end?

**ANSWER:** Not necessarily, the unit can work with a dial-up connection too. Please see the dial-up instructions included in the CD, or on our website. \*High speed is preferable.

**QUESTION:** Do I need to have a static IP address in order to access from a remote location?

**ANSWER:** The software supports both Static and Dynamic IP addresses. Your product number (on the back of the CD envelope) is considered your dynamic IP address.

**QUESTION: I am trying to access my server from a remote location, but I am unable to do so. Why?**

**ANSWER:** There could be several reasons.

1. Please check to see if your local computer has a live internet connection.
2. Please check to see if your remote computer has a live internet connection.
3. Please make sure that your network password is the same for the local computer (SERVER) and the remote computer.
4. Please check the connection method that you have selected in the SERVER (local computer)
5. Please make sure the connection method that you have created in the remote computer is correct.

**QUESTION: Can I maximize the remote screen size?**

**ANSWER:** Yes. You can. Right click any where in the screen and select Full Screen

**QUESTION: What is the maximum frame/sec that EZ-UDVR can support?**

**ANSWER:** Total of 120F/S by 4 cameras, and 240F/S by 8 cameras when stacked with a second EZ-UDVR.

**QUESTION: Can I use the search function only for the local computer?**

**ANSWER:** No. You can use the search function from a remote location as well. Once you are connected with the local computer from a remote location you can use the search function. The calendar on the search window will be displayed in red on any date that a recording has occurred.

**QUESTION: Can I download locally recorded video from a remote location?**

**ANSWER:** Yes. You can download the video to a local computer or you can stream the video and watch. If you stream the video and watch, when you disconnect the remote connection, the video will not be stored in the remote computer.

**QUESTION: How many people can access the Server at the same time?**

**ANSWER:** 8.

**QUESTION: How do I monitor the number of people connected to my Server?**

**ANSWER:** By looking for their IP addresses. This information helps if you want to disconnect anyone from accessing your Server.

**QUESTION: If I am behind a firewall, what port should I open?**

**ANSWER:** If you are behind a firewall, open the port 2000 for video transmission, 2001 for audio transmission, 2002 for p/t/z control and 2003 for remote search. This can be changed in the software if required.

**QUESTION: Can I archive the recorded video to another system in the network?**

**ANSWER:** Yes. You can schedule time and location for backup and the software will backup all the data in given time to the location set by you.

## 5.3 About application program

**QUESTION: What is the meaning of HDD percentage described in the top right of server program?**

**ANSWER:** It means the total used HDD space of the drive you designated for data storage. For example, if it describes 27%, then the total used HDD space including the recorded data, other programs is 27% of the total HDD space of the drive.

**QUESTION: Can I select a portion of a screen for motion detection rather than the entire screen?**

**ANSWER:** Yes. Click the Setup button, then the Motion Tab.

**QUESTION: Can I set the motion detection sensitivity?**

**ANSWER:** Yes. Click the Setup button, then the Motion Tab.

**QUESTION: Can I select the recording duration when the motion is detected?**

**ANSWER:** Yes. You can set the duration from 1 to 60 Sec.

**QUESTION: How many types of recordings are available?**

**ANSWER:** Manual Recording, Video Motion Detection Recording, Schedule Recording and External PIR Motion Detection. For external PIR motion detection you need an optional alarm block (which is available as an accessory).

**QUESTION: Can I search the Video by Date and Time?**

**ANSWER:** Yes. Click the Search button, and then select the desired date from the calendar.

**QUESTION: How can I distinguish the different types of recording when I play back?**

**ANSWER:** When you playback the recorded video based on the type of recording (Manual, Motion Detection, Schedule Recording or PIR Motion Detection) the software will distinguish the recording type by color (GREEN-continuous, RED-motion detection, ORANGE-Alarm Sensor activated, PINK-prerecording and each color with WHITE bar-with Audio Recording).

**QUESTION: Does the EZ-UDVR support over-write function (re-recording)?**

**ANSWER:** Yes.

## 5.4 About video image

**QUESTION: When I move my mouse pointer to the displayed images, unexpected pointer shadow appears. What happened?**

**ANSWER:** To make the shadow disappeared, you need to go to the Mouse menu in Control Panel and uncheck the check box of "Pointer shadow enabled"

**QUESTION:** It seems that there is a time delay between in real motion and in displaying. Why?

**ANSWER:** Less than 0.5second time delay is acceptable since it takes a time to display images after encoding the image data to Mpeg4. But if the time delay looks to exceed 0.5second, please check to see if your PC fulfills the minimum PC requirements as showed to the above diagram.

**QUESTION:** Can I maximize the local screen size?

**ANSWER:** Yes. You can. Right click any where in the screen and select Full Screen.

## 5.5 About Audio setting

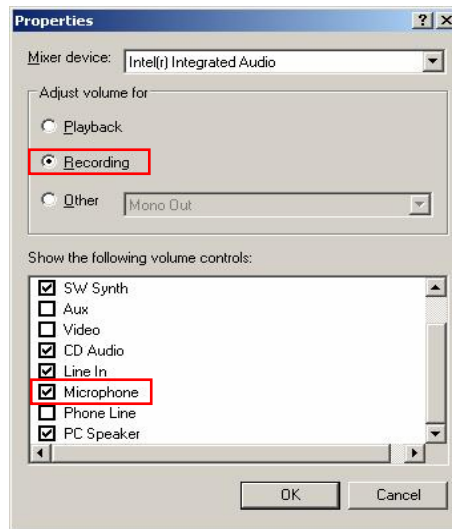
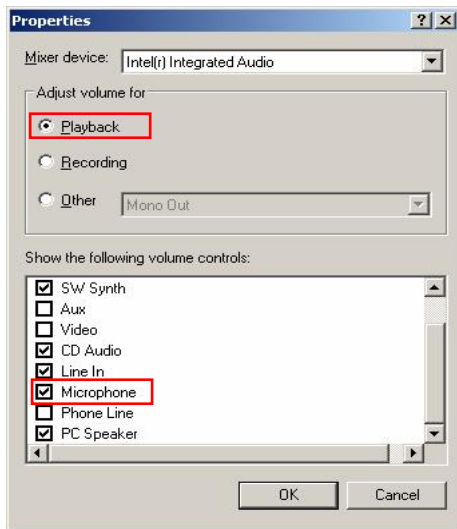
**QUESTION:** How can I make the Audio recorded and replayed with the Video?

**ANSWER:** E.Z.-UDVR is designed to use the PC audio setting for the Audio recording. Please setup the Microphone setting in Widows program after you connect a Speaker and Microphone to your PC that is installed E.Z.-UDVR. The explanation below is extracted from the E.Z.-UDVR User's Guide Appendix.

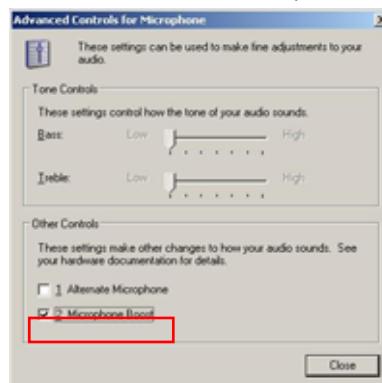
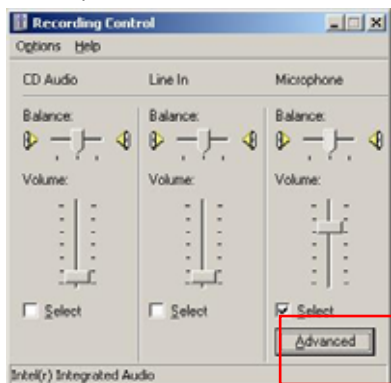
**1. Microphone Setting:** Connect the Microphone to the Mic.-In terminal of sound card in the E.Z.-UDVR BX Server/Client PC

**2. OS Setting of the E.Z.-UDVR BX Server/Client PC**

- 1) On the Windows Desktop, Click the [Start -> Programs -> Accessories -> Entertainment -> Volume Control].
- 2) Clicks the [Options -> Properties] on Menu bar of the 'Master volume' window shown.
- 3) Check 'Microphone' in case of both 'Playback' and 'Recording' in the 'Properties' window shown. Click 'OK'.



- 4) Check 'Select' of 'Microphone' section in the 'Recording Control' window shown. And, click 'Advanced' and check '2. Microphone Boost' of 'Other Controls' section in the 'Advanced Controls for Microphone'. Click 'Close'.



- 5) Check 'Mute' of 'Microphone' section in the 'Master Volume' window shown. Then, you can do the audio communication with E.Z.-UDVR BX system.

**3. E.Z.-UDVR BX Server/Client program Setting**

- 1) Setup mode -> System Setup -> Audio recording and transferring -> **Check 'Enable'**.
- 2) Click **'Speaker (On/Off) button'** to turn on the audio volume on main screen.

If the above setting is finished, enables you to listen to the sound is transmitted from the E.Z.-UDVR BX Server/Client connected.

### [NOTE]

1. E.Z.-UDVR BX Clients of up to max. 8 are able to connect to one E.Z.-UDVR BX Server. Therefore, it is possible to communicate between E.Z.-UDVR BX server and E.Z.-UDVR BX clients of up to max. 8.
2. Between the E.Z.-UDVR BX server and the E.Z.-UDVR BX client, the full-duplex A/V (audio/video) communication is possible. But it is not possible between E.Z.-UDVR BX clients.