

D-Link Router : Firmware 2

This setting applies to D-Link 500T, 520T, 504T, 2540T, 2640T, routers.

Step 1:

- Open Internet Explorer and type 192.168.1.1(default) into the address bar. (refer router quick guide manual)
- Fill in Username & Password.(default: admin, admin)
- Click "OK" to login.



Step 2:

- Click "Advanced" on the upper tab.
- Select "Lan Clients" on the left panel.
- IP Address -> CCTV Server or IP Camera's IP.
- Hostname -> CCTV
- Click "Add".



Step 3:

- The rules should listed below.
- Click "Apply".

Valid IP Range: 192.168.1.2 - 192.168.1.254

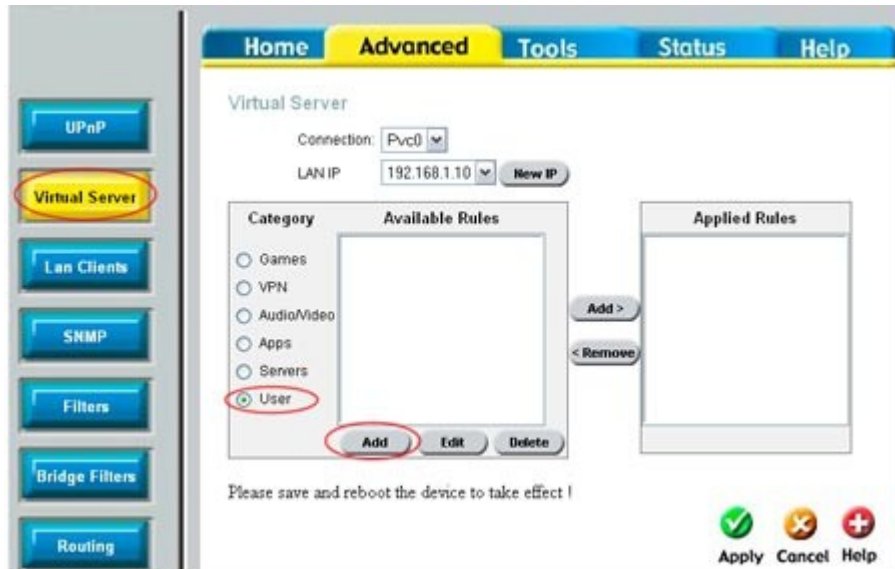
Static Addresses			
Delete	IP Address	Host Names	Type
<input type="checkbox"/>	192.168.1.10	CCTV	Static

Dynamic Addresses			
Reserve	IP Address	Host Names	Type



Step 4:

- Go to Virtual Server by click "Virtual Server" on left panel.
- Select "User", then select "Add".



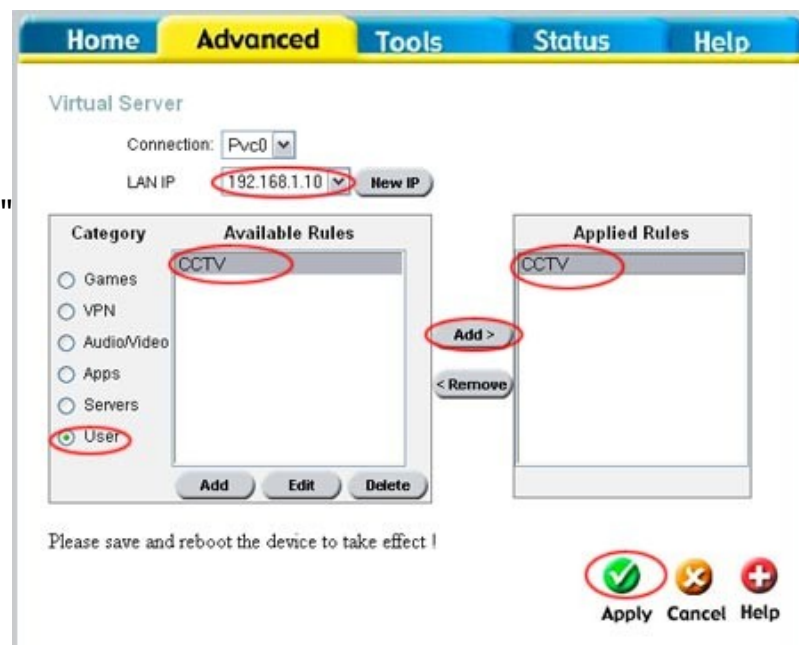
Step 5:

- Rule Name -> CCTV
- Keep Protocol setting as TCP
- Port Start -> 80 (Your CCTV server or IP Camera's port)
- Port End, Port Map, and Port Map End are the same as Port Start
- Click "Apply" to confirm the rules.
- Click "Virtual Server" to go back.



Step 6:

- Ensure that "LAN IP" is your CCTV server or IP Camera's IP Address.
- Select "User".
- Highlight "CCTV", and then click "Add".
- The CCTV rule will go to "Applied Rules"
- Click "Apply" to confirm the setting.



Step 7:

- Click "Tools" on the upper tab.
- Select "System" on the left panel.
- Click "Save and Reboot" button.
- After settings router, need to be click "Save and Reboot" button to save the settings.

