

D-Link Router : Firmware 1

This setting applies to D-Link 604T or older model router.

Step 1:

- Open Internet Explorer and type 192.168.0.1(default) into the address bar.
- Fill in Username & Password. (default: admin, password blank)
- Click "OK" to login.



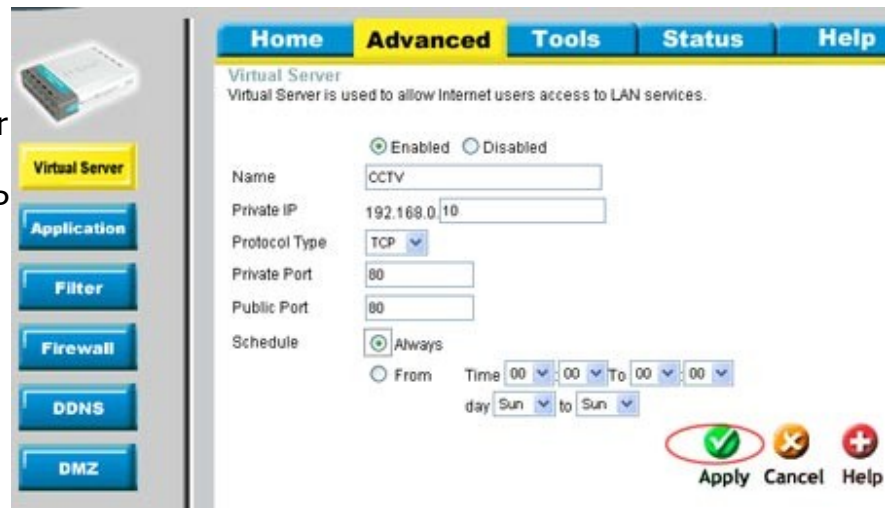
Step 2:

- Click "Advanced" on the upper tab.
- Select "Virtual Server" on the left panel.



Step 3:

- Check "Enabled" check box
- Name -> CCTV
- Private IP -> Your CCTV Server or IP Camera's IP Address
- Keep Protocol Type setting as TCP
- Private Port -> 80 (Your CCTV server or IP Camera's port)
- Public Port -> (same as Private Port)
- Schedule -> checked "Always"
- Click "Apply"



Step 4:

After clicked apply, the rules will listed should like belows.

Done

